



33 - 43 MARION STREET, HARRIS PARK

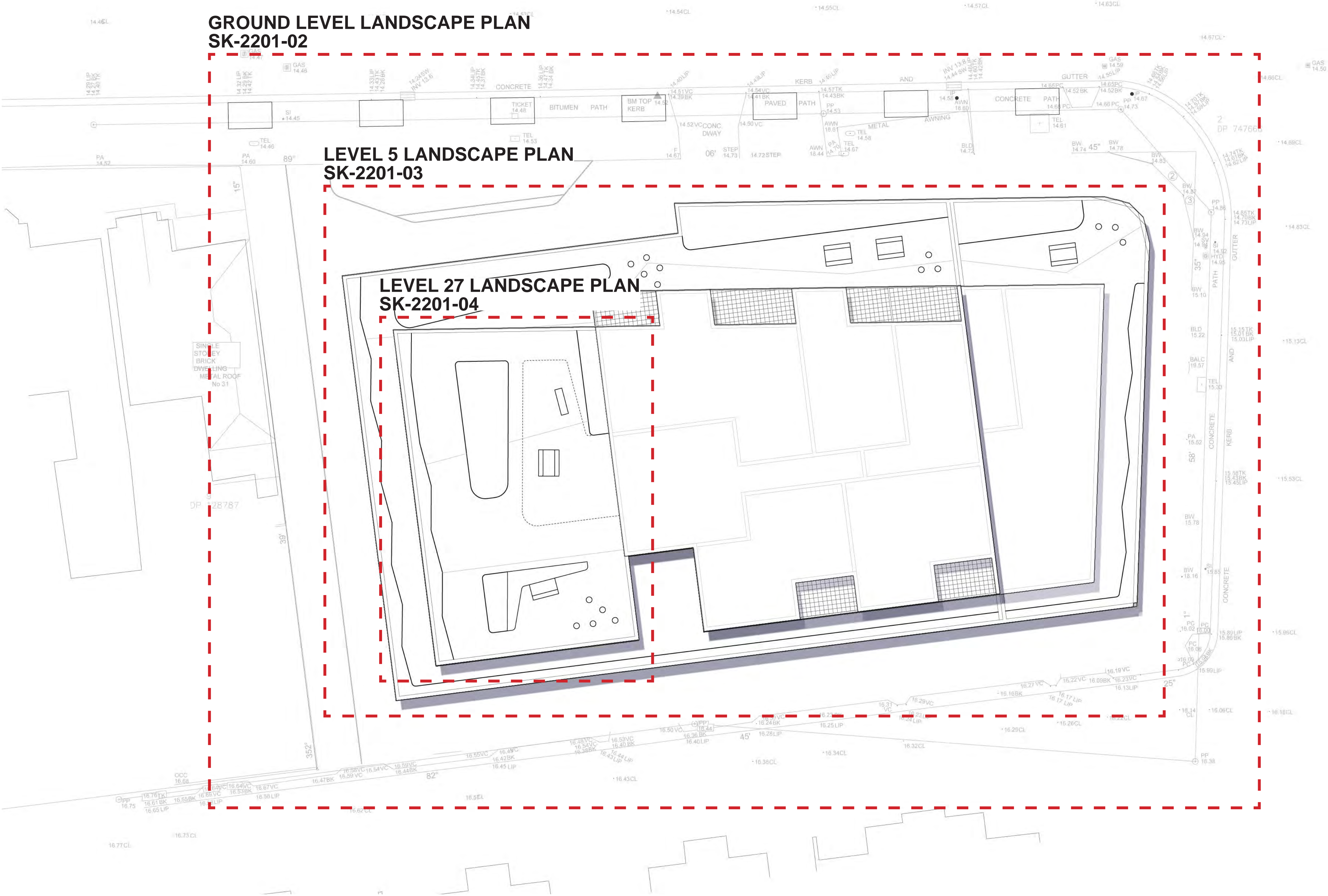
LANDSCAPE ARCHITECTURAL DRAWING SET

Issue: A

Date: 28.01.2022

FOR:
PACIFIC PLANNING

SITE PLAN



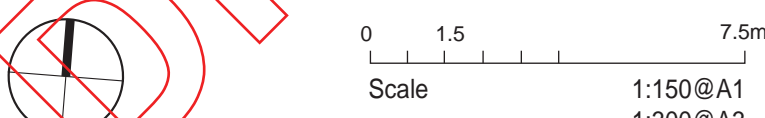
Suite 91, L5, 330 Wattle St
Ultimo NSW 2007
T. 02 9211 3744
W. www.sturt-noble.com.au
landscape architecture
environmental & urban design

PROJECT
33 MARION STREET, HARRIS PARK

CLIENT
PACIFIC PLANNING

DRAWING
SITE PLAN

DRAWING No. SK-2201-01 ISSUE A DRAWN jc DATE 28.01.2022



ACN: 104 245 514 ABN: 99 164 245 514
THIS DRAWING SHOULD BE READ IN CONJUNCTION WITH ALL RELEVANT
CONTRACTS, SPECIFICATIONS, REPORTS AND DRAWINGS. COPYRIGHT
OF THIS DRAWINGS IS VESTED IN STURT NOBLE ASSOCIATES PTY LTD.

GROUND FLOOR LANDSCAPE PLAN

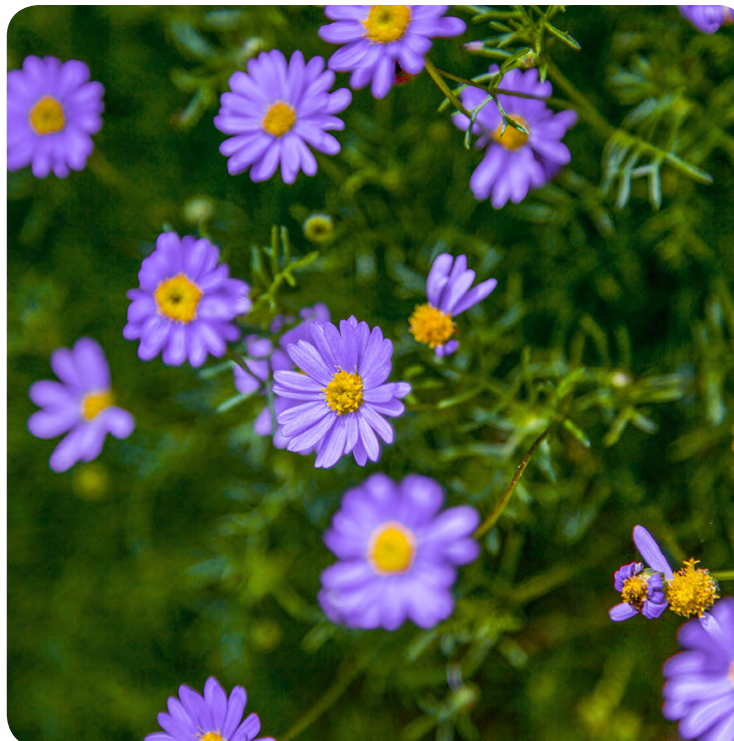


NOTES

1. Street trees. Species selection as per 'Public Domain Guidelines' Figure 4.4 CBD - Street Tree Strategy. Street tree planned as per 'Public Domain Guidelines' Figure 3.8 Typical Street Type Layout Urban Living
2. Existing widened footpath to be retained to accommodate tree canopy as shown 'Public Domain Guidelines' Figure 3.8 Typical Street Type Layout Urban Living
3. Make good existing pavers as per Public Domain Guidelines' Figure 4.2 CBD - Paving Strategy
4. Inclusion of planted garden areas to enhancesoftening of streetscape to City of Parramatta guidelines
5. Communal seating to front of building
6. Final unit paver to City of Parramatta approval.
7. Large canopy shade tree
8. Final design to be determined in conjunction with project architect. All ramps and hand rails to design standards
9. Through Site Link tree planting with layered understorey planting. Provide screening to neighbouring property. Understorey planting to 2m tall and small tree to 8m tall.

Tree species, selection and allocated soil volumes as found in *Apartment Design Guide 3E Deep Soil Zones Table 2*. Small native tree Blueberry Ash *Elaeocarpus reticulatus* 'Prima Donna'

PLANTING IMAGES



Brachyscome multifida



Correa alba



Cyathea cooperi



Dianella 'Silver Streak'



Melaleuca thymifolia

LEGEND

- Site boundary
- Awning over
- +98.000 RL = Proposed levels EX = Existing level TB = Top of Bench
- Proposed street trees as per 'Public Domain Guidelines' 2017, figure 3.8 Typical Street Type Layout and figure 4.4 CBD Street Tree Strategy
- Proposed trees. Minimum soil volume provided for small tree 15m3 as per the Apartment Design Guide. Refer to planting schedule on SK-2201-05 for species

Suite 91, L5, 330 Wattle St
Ultimo NSW 2007
T. 02 9211 3744
W. www.sturtnoble.com.au
landscape architecture
environmental & urban design

PROJECT
33 MARION STREET, HARRIS PARK

CLIENT
PACIFIC PLANNING

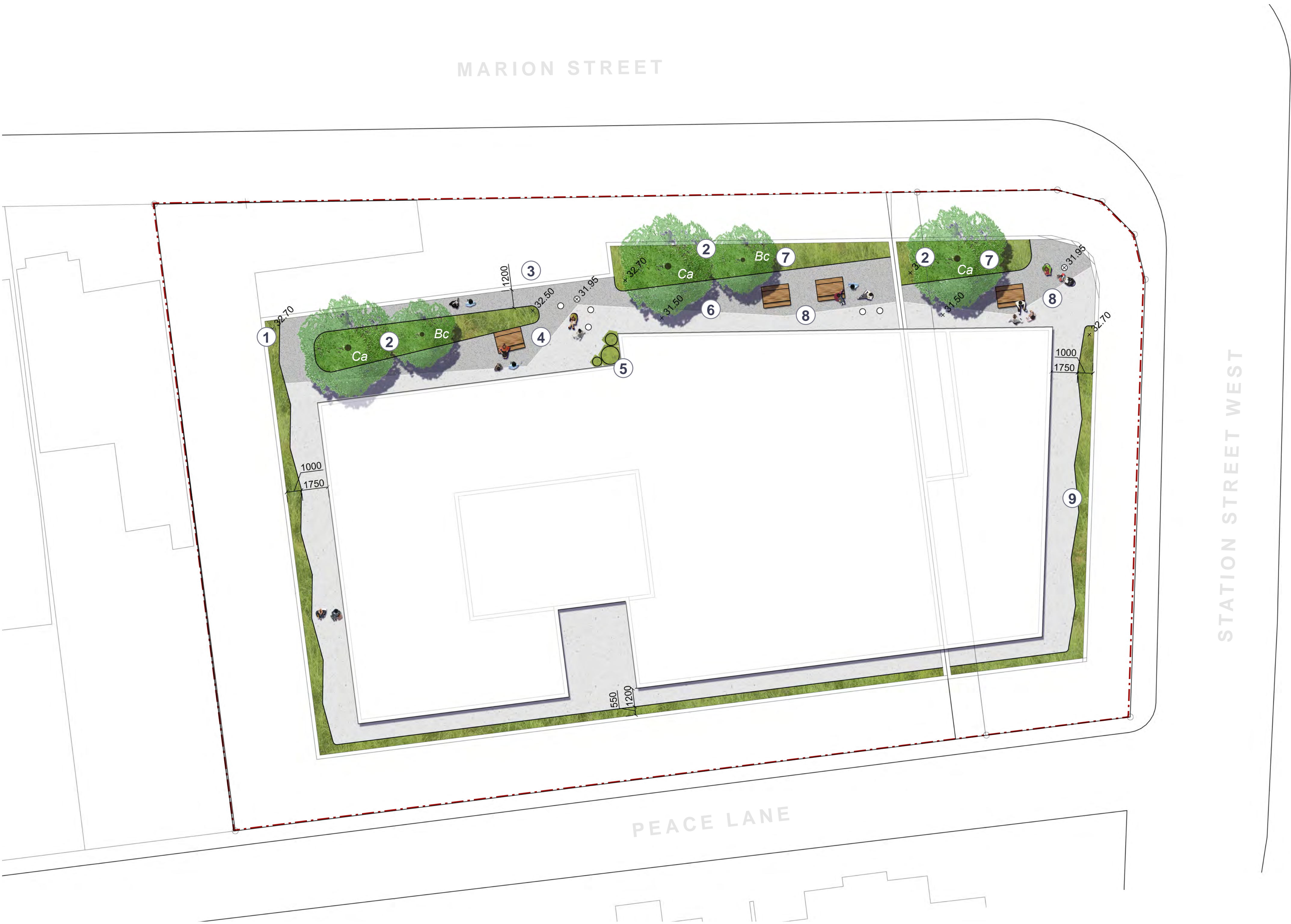
DRAWING
GROUND FLOOR LANDSCAPE PLAN

DRAWING NO.	ISSUE	DRAWN	DATE
SK-2201-02	A	jc	28.01.2022

0 1.5 7.5m
Scale 1:150 @A1
1:300 @A3

ACN: 164 245 514 ABN: 99 164 245 514
THIS DRAWING SHOULD BE READ IN CONJUNCTION WITH ALL RELEVANT CONTRACTS, SPECIFICATIONS, REPORTS AND DRAWINGS. COPYRIGHT OF THIS DRAWING IS VESTED IN STURT NOBLE ASSOCIATES PTY LTD.

LEVEL 5 LANDSCAPE PLAN



NOTES

- 1. Non climable planter with planting to total 2m high (including planter) to provide screening to neighbouring property
- 2. Feature trees with understorey planting to raised island planter. Minimum soil volume provided for small tree 15m3 as per the Apartment Design Guide.
- 3. Views directed to the North
- 4. Picnic table to island planter
- 5. Planting to feature pots
- 6. Two tone paving
- 7. Non climable planter
- 8. Picnic tables
- 9. Non climable planter with planting to 2m high (including planter) to provide screening from railway

LEGEND

- Site boundary
- +98.000 RL = Proposed levels
EX = Existing level
TB = Top of Bench
- Proposed trees. Minimum soil volume provided for small tree 15m3 as per the Apartment Design Guide. Refer to planting schedule on SK-2201-05 for species

PLANTING IMAGES



Dichondra argentea 'Silver Falls'



Kalanchoe tomentosa



Lomandra longifolia 'Tanika'



Myoporum parvifolium 'Yareena'



Sedum morganianum



Wahlenbergia communis

Sturt Noble Associates

PROJECT
33 MARION STREET, HARRIS PARK

CLIENT
PACIFIC PLANNING

DRAWING
LEVEL 5 LANDSCAPE PLAN

DRAWING NO.
SK-2201-03

ISSUE
A

DRAWN
jc

DATE
28.01.2022

0 1.5 7.5m

Scale

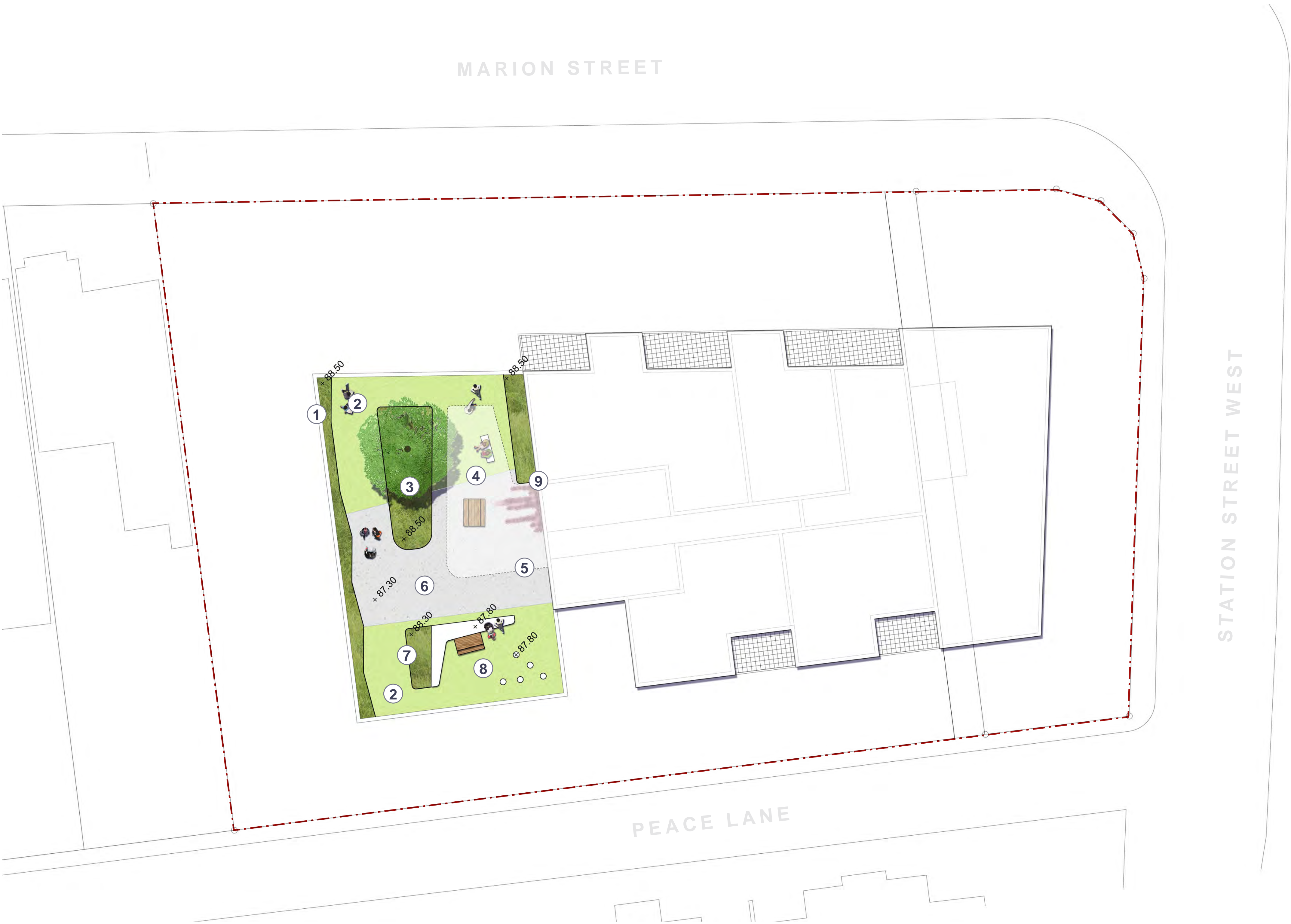
1:150 @ A1
1:300 @ A3

ACN: 164 245 514
ABN: 99 164 245 514

THIS DRAWING SHOULD BE READ IN CONJUNCTION WITH ALL RELEVANT CONTRACTS, SPECIFICATIONS, REPORTS AND DRAWINGS. COPYRIGHT OF THIS DRAWING IS VESTED IN STURT NOBLE ASSOCIATES PTY LTD.

Suite 91, L5, 330 Wattle St
Ultimo NSW 2007
T. 02 9211 3744
W. www.sturt-noble.com.au
landscape architecture
environmental & urban design

LEVEL 27 LANDSCAPE PLAN



NOTES

- 1. Non climable planter with planting to 2m high to provide screening to neighbouring property
- 2. Artificial turf
- 3. Feature tree with understorey planting to raised island planter
- 4. Communal picnic table and bench
- 5. Pergola
- 6. Unit paver
- 7. Raised island planter
- 8. Informal communal seating
- 9. Flowering vine to pergola from adjoining planter

LEGEND

- - - Site boundary
- - - Awning over
- +98.000 RL = Proposed levels
- EX = Existing level
- TB = Top of Bench
- Proposed trees. Minimum soil volume provided for small tree 15m3 as per the Apartment Design Guide. Refer to planting schedule on SK-2201-05 for species

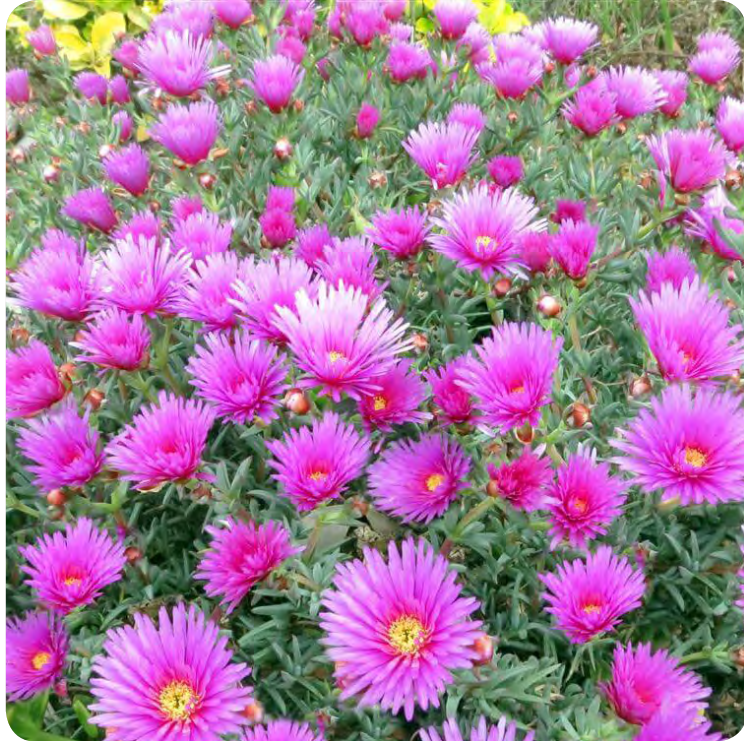
PLANTING IMAGES



Banksia spinulosa 'Stumpy Gold'



Grevillea 'Poorinda Royal Mantle'



Mesembryanthemum Pink



Pelargonium australe



Xerochrysum bracteatum



Zamia furfuracea

Sturt Noble
Associates

Suite 91, L5, 330 Wattle St
Ultimo NSW 2007
T. 02 9211 3744
W. www.sturt-noble.com.au
landscape architecture
environmental & urban design

PROJECT
33 MARION STREET, HARRIS PARK

CLIENT
PACIFIC PLANNING

DRAWING
LEVEL 27 LANDSCAPE PLAN

DRAWING NO.
SK-2201-04

ISSUE
A

DRAWN
jc

DATE
28.01.2022

0 1.5 7.5m
Scale
1:150 @ A1
1:300 @ A3

ACN: 164 245 514
ABN: 99 164 245 514

THIS DRAWING SHOULD BE READ IN CONJUNCTION WITH ALL RELEVANT CONTRACTS, SPECIFICATIONS, REPORTS AND DRAWINGS. COPYRIGHT OF THIS DRAWING IS VESTED IN STURT NOBLE ASSOCIATES PTY LTD.

PLANT SCHEDULE

CODE	BOTANICAL NAME	COMMON NAME	POT SIZE	SPACING
TREES				
Bc	<i>Backhousia citriodora</i>	Lemon myrtle	100L	A.S.
Ca	<i>Cupaniopsis anacardiodes</i>	Tuckeroo	100L	A.S.
Er	<i>Elaeocarpus reticulatus</i> ‘Prima Donna’	Blueberry Ash	100L	A.S.
Lc	<i>Lophostemon confertus</i>	Brush Box	100L	A.S.
Wf	<i>Waterhousea floribunda</i>	Weeping Lilly Pilly	100L	A.S.
SHRUBS & GROUNDCOVERS				
	<i>Alpinia caerulea</i> ‘Redback’	Redback Ginger	5L	0.5m
	<i>Anigozanthos</i> ‘Bush Pioneer’	Kangaroo Paw	150mm	0.5m
	<i>Asplenium nidus</i> ‘Osaka’	Birdsnest Fern	25L	0.8m
	<i>Banksia robur</i>	Swamp Banksia	25l	0.8m
	<i>Banksia spinulosa</i>	Birthday Candles Banksia	5L	0.8m
	<i>Banksia spinulosa</i> ‘Slumpy Gold’	Banksia spinulosa	5L	0.5m
	<i>Blechnum nudum</i>	Fishbone Water Fern	150mm	0.5m
	<i>Brachyscome multifida</i>	Native Daisy	150mm	0.3m
	<i>Carex appressa</i>	Tall Sedge	150mm	0.5m
	<i>Carpobrotus glaucescens</i>	Pig Face	150mm	0.2m
	<i>Convolvulus sabatius mauritanicus</i>	Purple Morning Glory	150mm	1m
	<i>Cordylina stricta</i>	Slender Palm Lily	25L	0.4m
	<i>Correa glabra</i>	Rock Correa	150mm	0.6m
	<i>Cyathea cooperi</i>	Australian Tree Fern	45L	A.S.
	<i>Cycas revoluta</i>	Sago Palm	25L	1.2m
	<i>Dianella caerulea</i>	Blue Flax-Lily	5L	0.4m
	<i>Dianella</i> ‘Border Silver’	Border Silver Flax Lily	150mm	0.4
	<i>Dianella</i> ‘Silver Streak’	Silver Streak Flax Lily	150mm	0.4m
	<i>Dichondra argentea</i> ‘Silver Falls’	Dichondra ‘Silver Falls’	150mm	0.4m
	<i>Elettaria cardamomum</i>	True Cardamo	5L	0.5m
	<i>Grevillea</i> ‘Poorinda Royal Mantle’	Royal Mantle Grevillea	5L	1m
	<i>Hardenbergia violacea</i>	Purple Coal Pea	5L	0.8m
	<i>Hedychium gardnerianum</i>	Ginger Lily	5L	0.6m
	<i>Helmholtzia glaberrima</i>	Stream Lily	25L	0.8m
	<i>Hibbertia scandens</i>	Guinea Flower	150mm	0.2m
	<i>Kalanchoe beharensis</i>	Felt Bush	150mm	0.2m
	<i>Kalanchoe tomentosa</i>	Chocolate soldier	150mm	0.2m
	<i>Liriope muscari</i> ‘Evergreen Giant’	Evergreen Giant Lily Turf	150mm	0.3m
	<i>Lomandra hystrix</i>	Slender Mat Rush	5L	1m
	<i>Lomandra longifolia</i> ‘Tanika’	Lomandra Tanika	150mm	0.3m
	<i>Macrozamia communis</i>	Burrawany	A.S.	25L
	<i>Melaleuca thymifolia</i>	Thyme Honey Myrtle	5L	0.8m
	<i>Mesembryanthemum Pink</i>	Pink Pigface	150mm	0.2m
	<i>Myoporum parvifolium</i>	Creeping Boobialla	150mm	0.5m
	<i>Myoporum parvifolium</i> ‘Yareena’	Yareena Myoporum	150mm	0.8m
	<i>Ozothamnus diosmifolius</i>	Rice Flower	150mm	0.8m
	<i>Pandorea pandorana</i>	Bower Plant	5L	A.S.
	<i>Pelargonium australe</i>	Native Storksbill	150mm	0.5m
	<i>Philodendron scandens</i>	Climbing Philodendron	5L	1m
	<i>Prostanthera rotundifolia</i>	Native Mint Bush	150mm	0.3m
	<i>Salvia officinalis</i>	Common Sage	150mm	0.2m
	<i>Scaevola aemula</i> ‘Aussie Crawl’	Fan Flower	150mm	0.6m
	<i>Sedum morganianum</i>	Burros Tail	150mm	0.2m
	<i>Senecio cineraria</i> ‘Dusty Miller’	Silver ragwort	150mm	0.3m
	<i>Senecio mandraliscae</i>	Blue Chalk Sticks	150mm	0.4m
	<i>Telopea speciosissima</i>	NSW Waratah	25L	2m
	<i>Tulbaghia violacea</i>	Society Garlic	150mm	0.2m
	<i>Viola hederacea</i>	Australian Native Violet	150mm	0.2m
	<i>Wahlenbergia communis</i>	Tufted Bluebell	5L	0.3m
	<i>Xerochrysum bracteatum</i>	Everlasting Daisy	5L	0.6m
	<i>Zamia furfuracea</i>	Cardboard Palm	25L	1.5m
	<i>Zamioculcas zamiifolia</i>	Zanzibar Gem	5L	0.5m

PLANT IMAGES



Alpinia caerulea ‘Redback’



Carpobrotus glaucescens



Dichondra argentea ‘Silver Falls’



Liriope muscari ‘Evergreen Giant’



Telopea speciosissima



Banksia robur



Cordyline glauca



Hardenbergia violacea



Melaleuca thymifolia



Wahlenbergia communis



Banksia spinulosa



Cyathea cooperi



Hibbertia scandens



Pandorea pandorana



Xerochrysum bracteatum



Brachyscome multifida



Dianella ‘Silver Streak’



Kalanchoe tomentosa



Sedum morganianum



Zamia furfuracea



Suite 91, L5, 330 Wattle St
Ultimo NSW 2007
T. 02 9211 3744
W. www.sturnoble.com.au
landscape architecture
environmental & urban design

PROJECT
33 MARION STREET, HARRIS PARK

CLIENT
PACIFIC PLANNING

DRAWING
GROUND FLOOR LANDSCAPE PLAN

DRAWING NO.
SK-2201-05

ISSUE
A

DRAWN
jc

DATE
28.01.2022



0 1.5 7.5m
Scale

1:150@A1
1:300@A3

ACN: 104 245 514
ABN: 99 164 245 514

THIS DRAWING SHOULD BE READ IN CONJUNCTION WITH ALL RELEVANT CONTRACTS, SPECIFICATIONS, REPORTS AND DRAWINGS. COPYRIGHT OF THIS DRAWINGS IS VESTED IN STURT NOBLE ASSOCIATES PTY LTD.